

Fenice



505



51



201



455



451



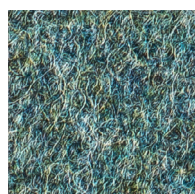
502



52



211



454



452



503



102



202



351



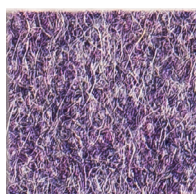
453



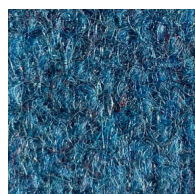
504



101



251



358



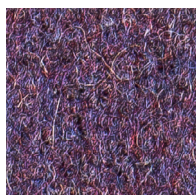
601



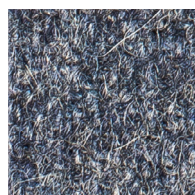
551



57



252



301



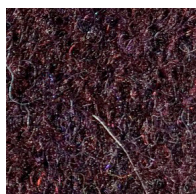
602



553



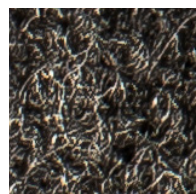
103



256



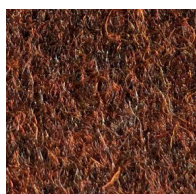
303



603



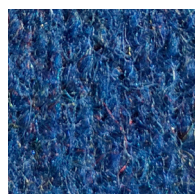
552



563



302

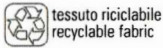


313



651

Fenice



tessuto riciclabile
recyclable fabric



colori speciali
special colours

Composizione	75% Lana - 25% Poliammide
Peso	gr/mtl 500 ± 7%
Altezza	cm 150 ± 5%
Lunghezza pezze	mt 45 ± 5%
Abrasione	(Martindale) UNI EN ISO 12947:2000 100.000 cicli ± 20%
Solidità alla luce	(Xenotest) UNI EN ISO 105 B02 6 ± 1
Certificati di Resistenza al fuoco	Italia - Classe 1 IM con schiuma standard ignifuga con densità 25 kg/cu.m EN 1021 Part.1-2 using a standard foam 20/22 kg/cu.m USA Calif. Bull. 117 June 2013
Manutenzione	Usare con regolarità l'aspirapolvere a beccuccio liscio, senza spazzolare.
Differenze di colore	Leggere differenze di colore fra una partita e l'altra sono da considerarsi normali.

Composition	75% Wool - 25% Polyamide
Weight	gr/lm 500 ± 7%
Width	cm 150 ± 5%
Piece Length	lm 45 ± 5%
Abrasion Test	(Martindale) UNI EN ISO 12947:2000 100.000 turns ± 20%
Lightfastness	(Xenotest) UNI EN ISO 105 B02 6 ± 1
Flammability Certificates	Italy - Class 1 IM using a standard FR polyurethane foam 25 kg/cu.m density EN 1021 Part.1-2 using a standard foam 20/22 kg/cu.m USA Calif. Bull. 117 June 2013
Maintenance	Use the vacuum-cleaner with smooth spout regularly, don't brush.
Colour Matching	Slight differences between dyeing lots are considered normal.